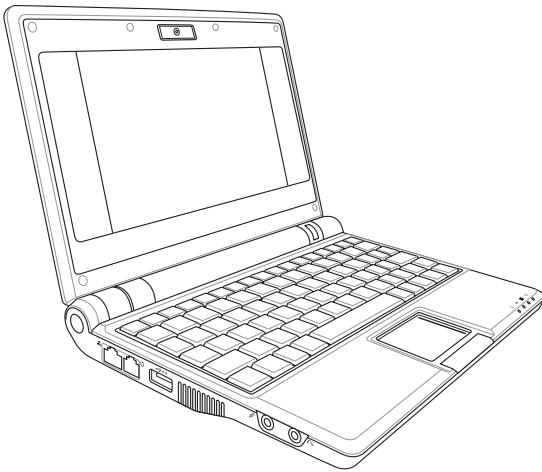


Eee PC

Windows[®] XP Installation Guide



November 2007
15G06Q009000

Copyright Information

No part of this manual, including the products and software described in it, may be reproduced, transmitted, transcribed, stored in a retrieval system, or translated into any language in any form or by any means, except documentation kept by the purchaser for backup purposes, without the express written permission of ASUSTeK COMPUTER INC. ("ASUS").

ASUS PROVIDES THIS MANUAL "AS IS" WITHOUT WARRANTY OF ANY KIND, EITHER EXPRESS OR IMPLIED, INCLUDING BUT NOT LIMITED TO THE IMPLIED WARRANTIES OR CONDITIONS OF MERCHANTABILITY OR FITNESS FOR A PARTICULAR PURPOSE. IN NO EVENT SHALL ASUS, ITS DIRECTORS, OFFICERS, EMPLOYEES OR AGENTS BE LIABLE FOR ANY INDIRECT, SPECIAL, INCIDENTAL, OR CONSEQUENTIAL DAMAGES (INCLUDING DAMAGES FOR LOSS OF PROFITS, LOSS OF BUSINESS, LOSS OF USE OR DATA, INTERRUPTION OF BUSINESS AND THE LIKE), EVEN IF ASUS HAS BEEN ADVISED OF THE POSSIBILITY OF SUCH DAMAGES ARISING FROM ANY DEFECT OR ERROR IN THIS MANUAL OR PRODUCT.

Products and corporate names appearing in this manual may or may not be registered trademarks or copyrights of their respective companies, and are used only for identification or explanation and to the owners' benefit, without intent to infringe.

SPECIFICATIONS AND INFORMATION CONTAINED IN THIS MANUAL ARE FURNISHED FOR INFORMATIONAL USE ONLY, AND ARE SUBJECT TO CHANGE AT ANY TIME WITHOUT NOTICE, AND SHOULD NOT BE CONSTRUED AS A COMMITMENT BY ASUS. ASUS ASSUMES NO RESPONSIBILITY OR LIABILITY FOR ANY ERRORS OR INACCURACIES THAT MAY APPEAR IN THIS MANUAL, INCLUDING THE PRODUCTS AND SOFTWARE DESCRIBED IN IT.

Copyright © 2007 ASUSTeK COMPUTER INC. All Rights Reserved.

Limitation of Liability

Circumstances may arise where because of a default on ASUS' part or other liability, you are entitled to recover damages from ASUS. In each such instance, regardless of the basis on which you are entitled to claim damages from ASUS, ASUS is liable for no more than damages for bodily injury (including death) and damage to real property and tangible personal property; or any other actual and direct damages resulted from omission or failure of performing legal duties under this Warranty Statement, up to the listed contract price of each product.

ASUS will only be responsible for or indemnify you for loss, damages or claims based in contract, tort or infringement under this Warranty Statement.

This limit also applies to ASUS' suppliers and its reseller. It is the maximum for which ASUS, its suppliers, and your reseller are collectively responsible.

UNDER NO CIRCUMSTANCES IS ASUS LIABLE FOR ANY OF THE FOLLOWING: (1) THIRD-PARTY CLAIMS AGAINST YOU FOR DAMAGES; (2) LOSS OF, OR DAMAGE TO, YOUR RECORDS OR DATA; OR (3) SPECIAL, INCIDENTAL, OR INDIRECT DAMAGES OR FOR ANY ECONOMIC CONSEQUENTIAL DAMAGES (INCLUDING LOST PROFITS OR SAVINGS), EVEN IF ASUS, ITS SUPPLIERS OR YOUR RESELLER IS INFORMED OF THEIR POSSIBILITY.

Service and Support

Visit our multi-language web site at <http://support.asus.com>

Table of Contents

Chapter 1: Installing & Optimizing Windows® XP

- Preparing to install Windows® XP 1-2
- Installing Windows® XP..... 1-2
- Adjusting the Display Resolution..... 1-5
- Optimizing Windows® XP..... 1-6
 - Changing Virtual Memory 1-6
 - Turning off System Restore 1-7
 - Compressing Disk Drive 1-8
 - Relocating Files..... 18
 - Deleting unnecessary Windows Components..... 1-10
 - Clearing System Backup Data 1-10
 - Deleting unnecessary document files 1-11

Chapter 2: Support CD & System Recovery

- Support CD information 2-2
 - Running the support CD 2-2
 - Drivers menu..... 2-3
 - Utilities menu..... 2-5
 - Manual 2-6
 - Contact 2-6
 - Other information 2-7
- System Recovery 2-7

Preparing to Install Windows® XP

Installing Windows® XP

Adjusting the Display Resolution

Optimizing Windows® XP

Installing & Optimizing Windows® XP

A large, light gray, stylized number '1' is positioned behind the main title text, extending from the top of the 'Installing & Optimizing' line down to the 'XP' part of the title.

Preparing to install Windows® XP

Before installing Windows® XP operating system to your Eee PC, you need the following items.

- A USB 2.0 CD/DVD-ROM
- The official Windows® XP Service Pack 2 disc from Microsoft®
- A USB flash disk (size larger than 1GB) or external hard disk drive
- ASUS Eee PC support CD from the package



The older version of Windows® OS does not support USB CD/DVD-ROM. Ensure the disc you have is Windows® XP Service Pack 2.

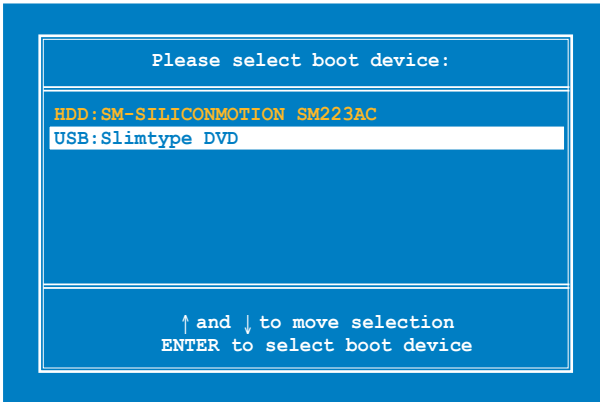
Installing Windows® XP

Follow the instructions below to install Windows® XP service pack 2:

1. Connect the power cord to your Eee PC.
2. Insert the Windows XP Service Pack 2 disc to the USB CD/DVD-ROM and connect the USB optical drive to your Eee PC.
3. Press <ESC> during the bootup screen.



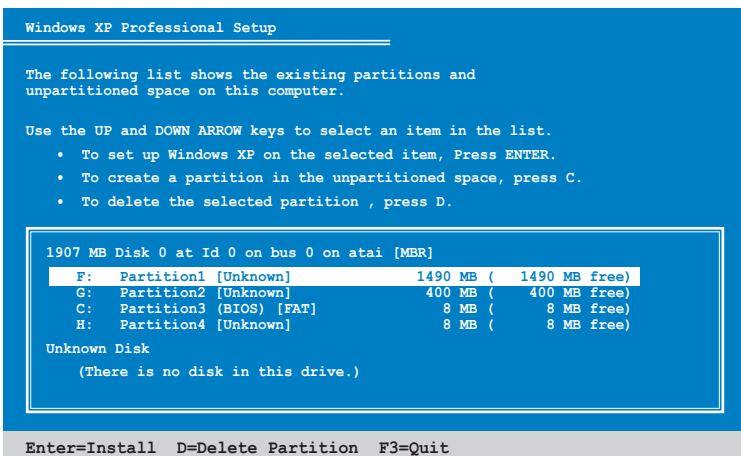
6. The **Please select boot device screen** appears. Select USB: XXXXXX (may be labeled as the ODD brand name) to boot from the optical drive.



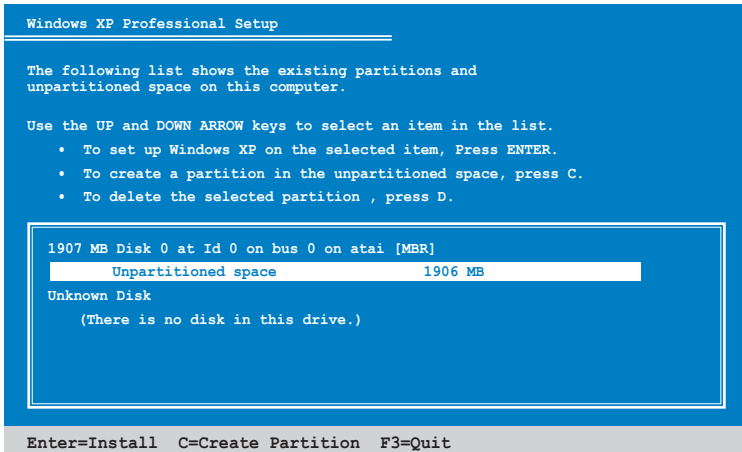
7. After the Windows® XP installation screen appears. Press <D> to delete the existing partitions.



You will lose all your data after deleting all existing disk partitions. Ensure to back up your important data before installing Windows® XP to your Eee PC.



- After all the existing partitions are deleted, the unpartitioned space appears.



- Press <Enter> and select **Format the partition using the NTFS file system** to start the Windows® XP OS setup.
- Follow the on-screen instructions to complete the installation process.
- After the Windows® XP OS installation is completed. Restart the system.
- After entering Windows, insert the Support CD to the USB CD/DVD-ROM and click **InstAll - Drivers Installation Wizard** to install all drivers.



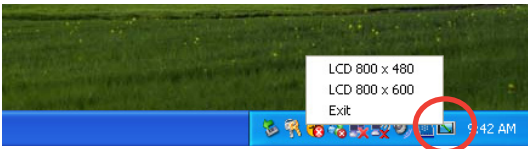
It may take some time to install Windows XP operating system and reinstall all the drivers. If the screensaver starts, press any key to bring back the installation screen.

Adjusting the Display Resolution

If you need to adjust the display resolution of your Eee PC in Windows XP environment, you can easily change it with ASUS Eee PC Utility that comes within the Support CD.

To adjust the display resolution:

1. Ensure that you've installed the ASUS ACPI driver and utility. Refer to the next chapter for details.
2. Right-click the ASUS Eee PC Utility icon on the OS taskbar to adjust the display resolution. Select **LCD 800 x 480** or **LCD 800 x 600** based on your needs.



3. When you select **LCD 800 x 600**, move the cursor to scroll up and down the screen.



Scroll up to see the top of the screen.



Scroll down to see the bottom of the screen.

Optimizing Windows® XP

For the best performance of your Eee PC with Windows XP operating system, follow some quick steps below to make your Eee PC run faster.

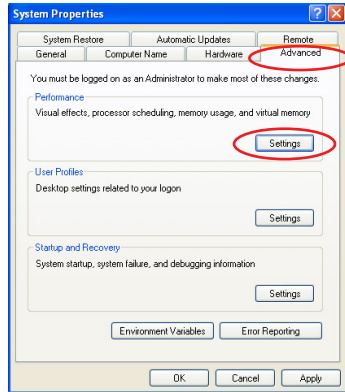


Refer to Microsoft website (<http://www.microsoft.com>) for more information.

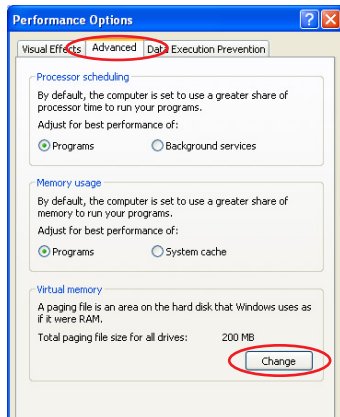
Changing Virtual Memory

Change the virtual memory based on your needs.

1. Go to **Control Panel > System**.
2. Click the **Advanced** tab on the top and click the **Settings** button in **Performance** area.



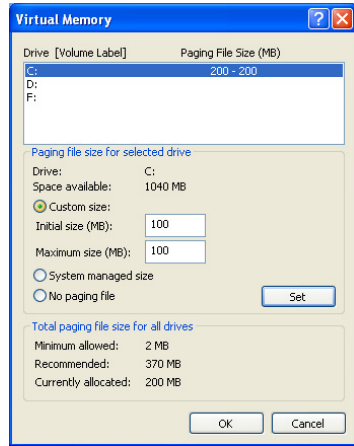
3. Click **Advanced** tab and the **Change** button to change the virtual memory.



4. Enter the **Initial size** and the **Maximum size** based on your needs.



Set both Initial and Maximum size to 100 MB.



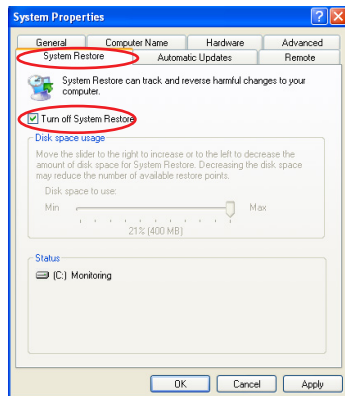
Turning off System Restore

Though System Restore can track and reverse changes to your computer, it consumes system resources. Follow the instructions to turn off System Restore.

1. Go to **Control Panel > System**.
2. Click **System Restore** tab on the top.
3. Click the box before **Turn off System Restore**.



After turning off System Restore, you cannot track and reverse changes to your computer.



Compressing Disk Drive

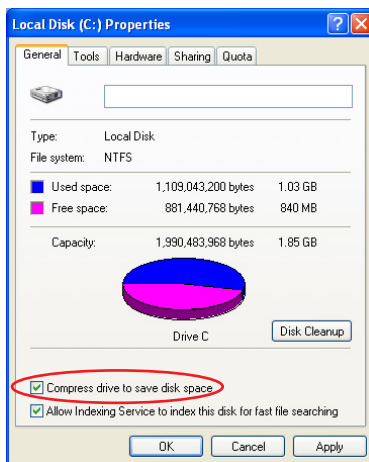
1. Go to **Control Panel > My Computer**.
2. Right-click **Local Disk (C:)** and select **Properties**.
3. Check the box before **Compress drive to save disk space**.



This compression function cannot apply to read-only files. Select **Skip to All** to skip the incompressible files and continue.



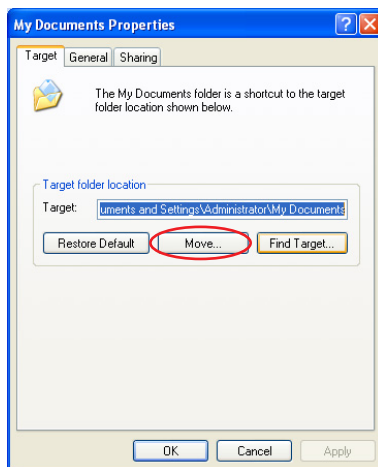
The disk drive space varies depending on model.



Relocating Files

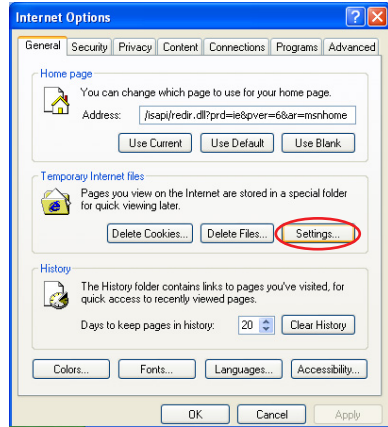
My Documents

1. Prepare an external storage device such as an SD card or a USB flash disk drive.
2. Click **Start**, right-click **My Documents** and select **Properties**.
2. Click **Move** and select a destination in the connected external storage device.
3. Click **OK** to relocate **My Documents**.

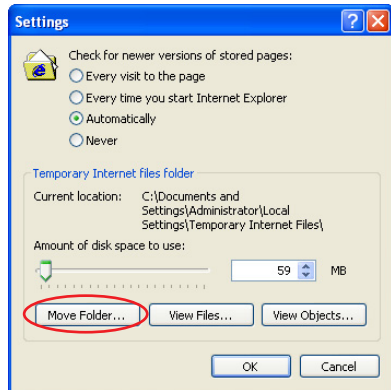


IE Temporary Internet Files

1. Prepare an external storage device such as an SD card or a USB flash disk drive.
2. Launch Internet Explorer.
2. Click **Tools** on the top and select **Internet Options**.
3. Click **Settings** in **Temporary Internet files** area.

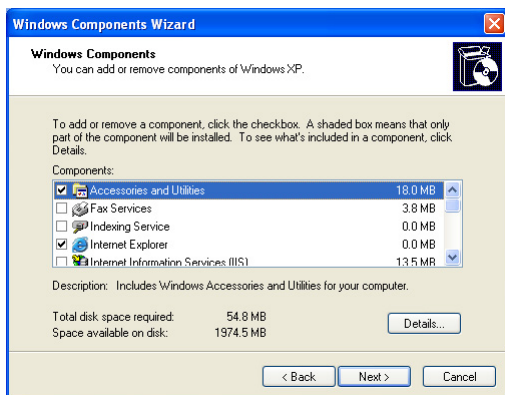


4. Click **Move Folders** and select a destination in the connected external storage device.
5. Click **OK** to relocate **Temporary Internet Files**.



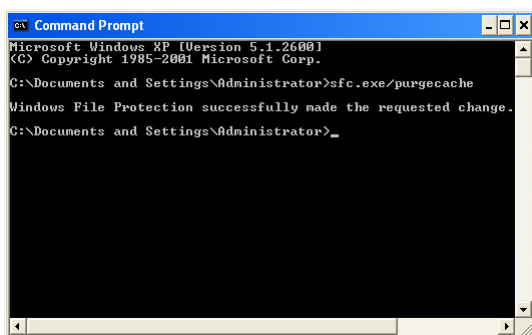
Deleting unnecessary Windows Components

1. Go to **Control Panel > Add or Remove Programs**.
2. Click **Add/Remove Windows Components** on the left to display the component wizard.
3. Uncheck the boxes for the Windows components you do not need and click **Next**.



Clearing System Backup Data

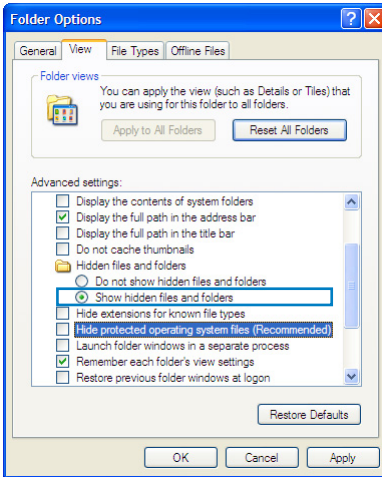
1. Go to **All Programs > Accessories > Command Prompt**.
2. Key in **sfc.exe/purgecache**.
3. Press <Enter> to clear the system backup data.



If you choose not to turn off the system restore function, DO NOT perform the system backup data clearance.

Deleting unnecessary document files

1. Go to **Start > My Computer**.
2. Click **Tools** on the top and select **Folder Options**.
3. Click the **View** tab. Toggle the option **Show hidden files and folders**, and unselect **Hide protected operating system files (Recommended)**.



4. Connect a USB flash disk (size larger than 1GB) or a USB hard disk drive to your Eee PC for to back up the files you want to delete.
5. Refer to the table on the next page for the system files you can delete. Open **Local Disk (C:)** and type the directories in the address field to locate the files.



- If your Eee PC malfunctions after the system file removal, use the backup disk you made in step 4 to restore the files.
- Ensure to keep you backup files carefully.
- After deleting the unnecessary document files, we recommend you restore the default settings. Toggle the option **Do not show hidden files and folders** and uncheck to hide protected operating system files.

Directory	File/Folder name	Description
Media sample files		
Windows\System32	Logon.scr and other *.scr files	Built-in screensaver
Windows\Web\Wallpaper	Ascent.jpg and other *.jpg files	Built-in wallpaper
Documents and Settings\All Users\Document	Shared Music, Shared Pictures, Shared Video	Built-in samples
Windows Service Pack 2 and Hot Fix Files		
Windows\	KB*.txt files	Uninstall information about SP2 or Hot Fix
Windows\	SET*.tmp	
Windows\	\\\$hf_mig\$ \\\$NtUninstallKB****\$	Uninstall files of SP2 and Hot Fix



-
- Connect an external storage device to you Eee PC. We recommend you install applications to the external storage device.
 - It might take longer to install applications to the external storage device.
-

Support CD
System Recovery

**Support CD &
System Recovery**

A large, light gray number '2' is positioned behind the main title text, serving as a decorative element.

Support CD information

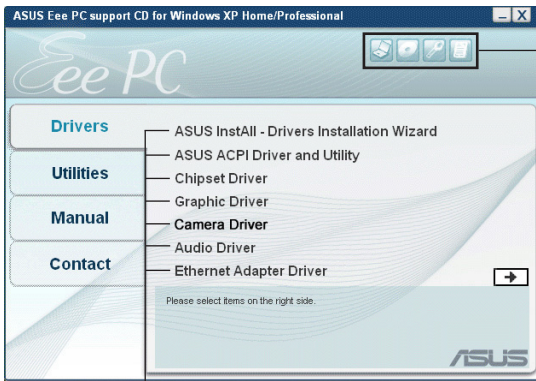
The support CD that comes with the Eee PC package contains the drivers, software applications, and utilities that you can install to avail all the features.



All the following screens appear only in the Windows® XP SP2 environment.

Running the support CD

Insert the support CD in the external optical drive. The CD automatically displays the Drivers menu if Autorun is enabled in your computer.



Click an icon to display support CD/ Eee PC information

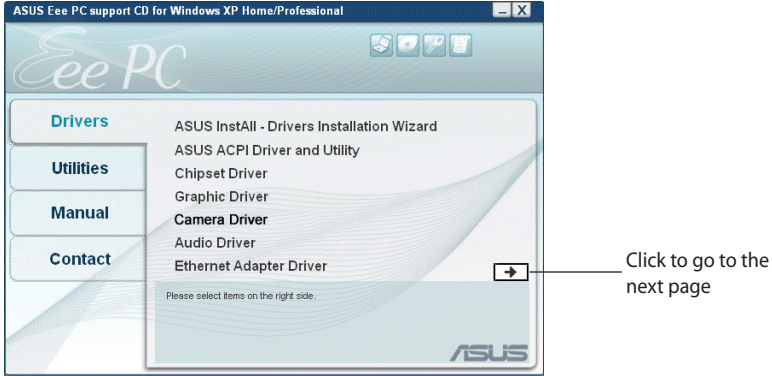
Click an item to install



If Autorun is NOT enabled in your computer, browse the contents of the support CD to locate the file ASSETUP.EXE from the BIN folder. Double-click the ASSETUP.EXE file to run the CD.

Drivers menu

The Drivers menu shows available device drivers when the system detects installed devices. Install the necessary drivers to activate the devices.



InstAll - Drivers Installation Wizard

Installs all the drivers.

ASUS ACPI Driver and Utility

Installs ASUS ACPI driver before all the drivers if you are not using InstAll Wizard.

Chipset Driver

Installs the chipset driver.

Graphic Driver

Installs the graphics driver.

Camera Driver (optional)

Installs the camera driver.

Audio Driver

Installs the audio driver.

Ethernet Adapter Driver (optional)

Installs the Ethernet adapter driver.



Click to go to the previous page

Wireless LAN Driver (optional)

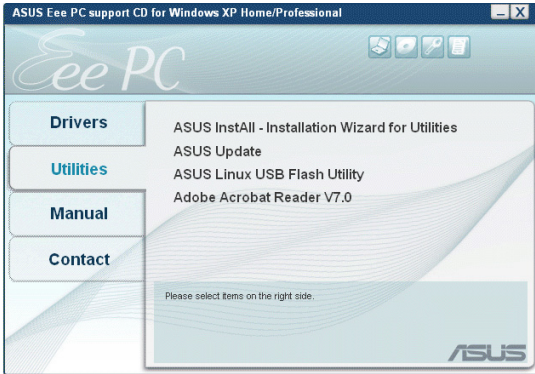
Installs the wireless LAN driver.

TouchPad Driver

Installs the touchpad driver.

Utilities menu

The Utilities menu shows the applications that the Eee PC supports.



InstAll - Installation Wizard for Utilities

Installs all the utilities.

ASUS Update

The ASUS Update utility allows you to update the Eee PC BIOS in the Windows® environment. This utility requires an Internet connection either through a network or an Internet Service Provider (ISP).

ASUS Linux USB Flash Utility

Makes a USB bootable disk with Linux system image for Eee PC system recovery.

ADOBE Acrobat Reader V7.0

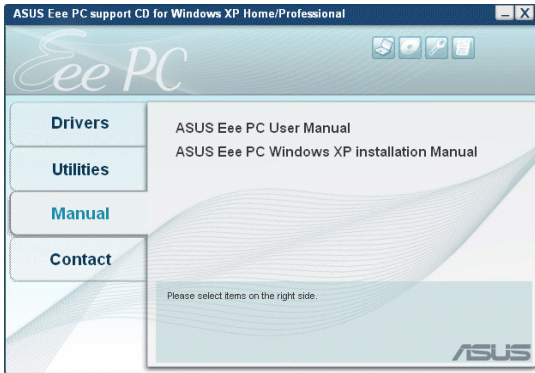
Installs the Adobe® Acrobat® Reader that allows you to open, view, and print documents in Portable Document Format (PDF).

Manual

The Manual menu contains a list of supplementary user manuals. Click an item to open the folder of the user manual.

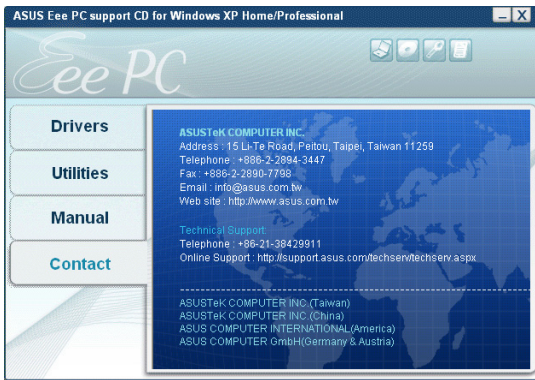


Most user manual files are in Portable Document Format (PDF). Install the Adobe® Acrobat® Reader from the Utilities menu before opening a user manual file.



Contact

Click the Contact tab to display the ASUS contact information. You can also find this information on the inside front cover of this user guide.



Other information

The icons on the top right corner of the screen provide additional information on the Eee PC and the contents of the support CD. Click an icon to display the specified information.



System information



Technical support



CD content



File list

System Recovery

There are two ways to perform the system recovery, using the support CD and using USB flask disk drive. Refer to the chapter 5 of the user manual for more information on restoring your system from Windows XP back to factory default Linux.



The OS image file bundled in the support CD may be not the latest version. After the system recovery, use the **Add/Remove Software** in the **Settings** tab to update your OS.

